

AV ZARAGOZA 30

LOCAL COMERCIAL Nº 1

PLTA BAJA:

-SUP. CONST. 132,00 M²

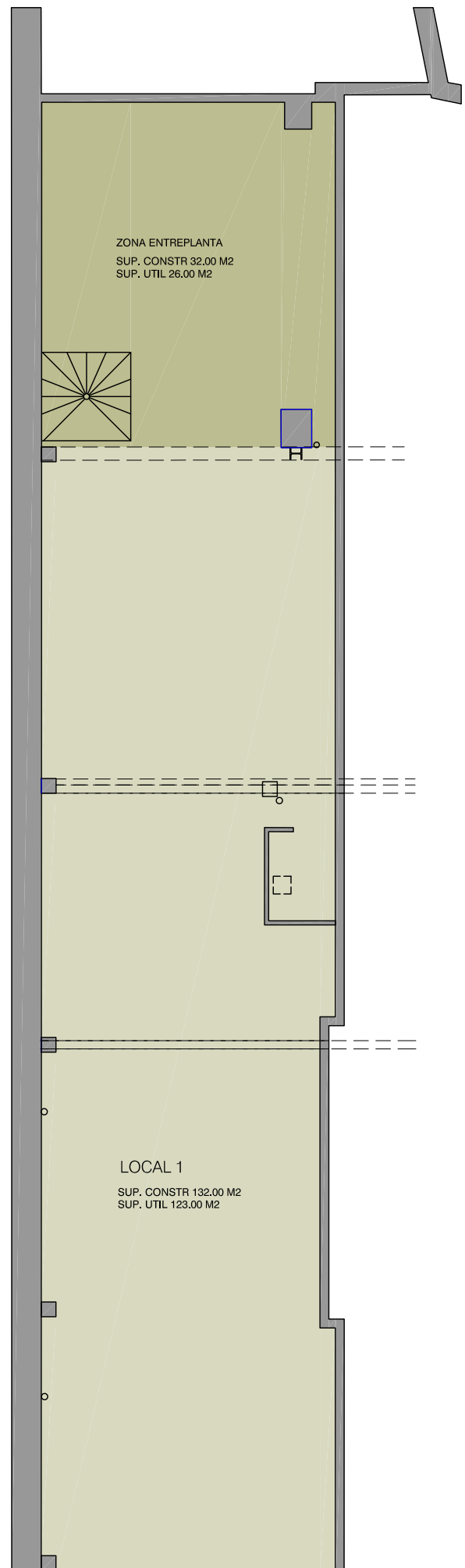
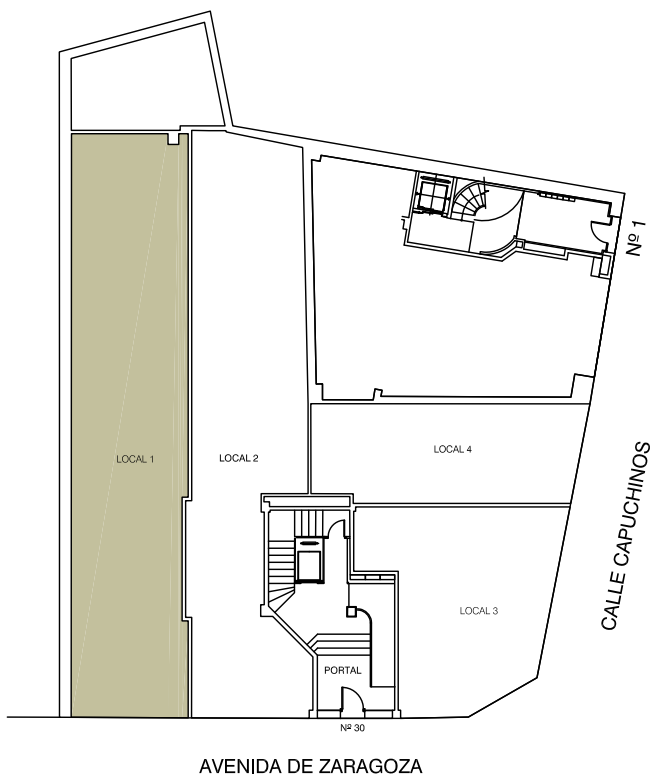
-SUP. UTIL 123,00 M²

ENTREPLANTA:

-SUP. CONST 32,00 M²

-SUP. UTIL 26,00 M²

(ALTURA TOTAL LOCAL 3,95 M)



ESCALA 1/100

AV ZARAGOZA 30

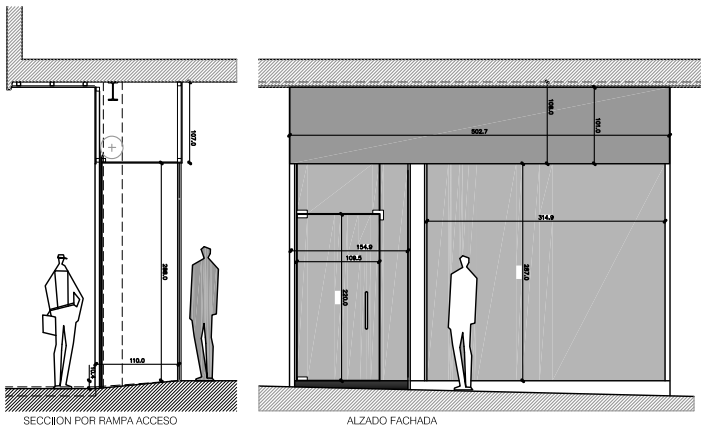
LOCAL COMERCIAL Nº 2

PLTA BAJA:

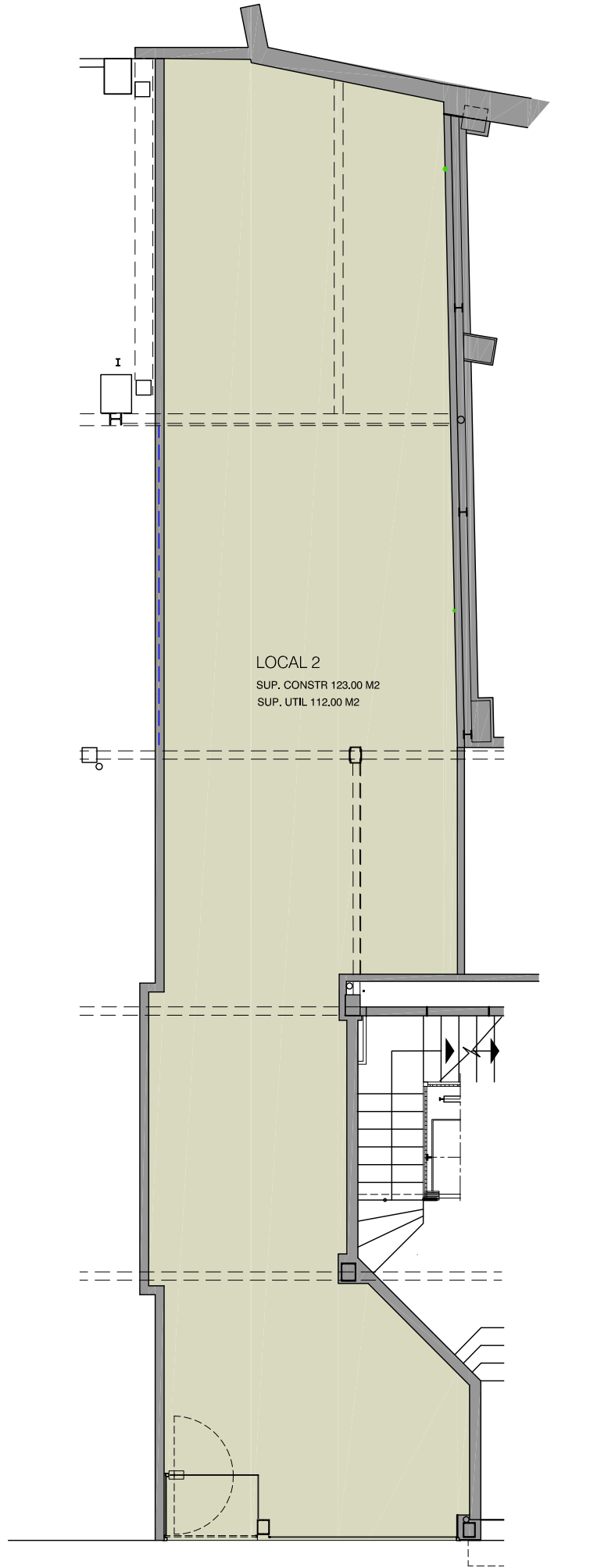
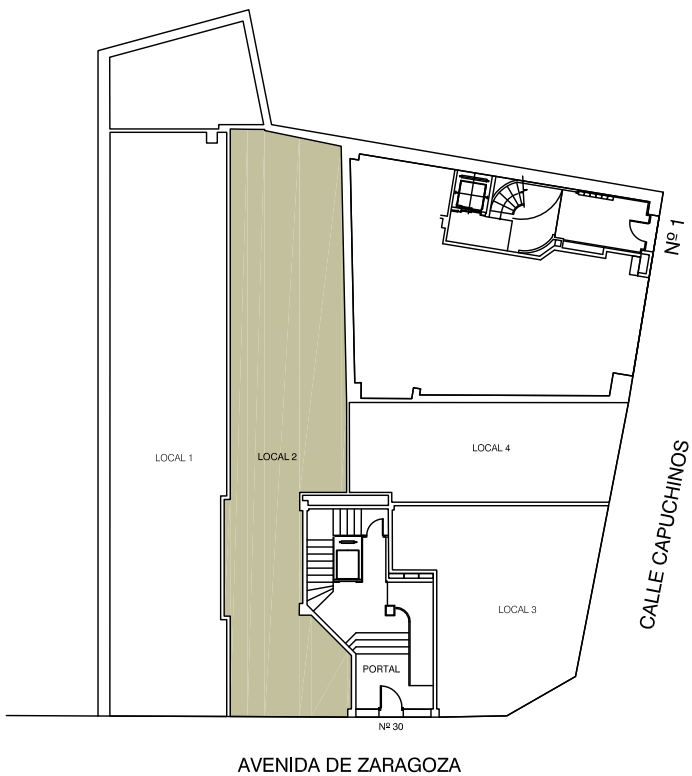
-SUP. CONST. 123,00 M2

-SUP. UTIL 112,00 M2

(ALTURA TOTAL LOCAL 3,95 M)



ESCALA 1/100



AV ZARAGOZA 30

LOCAL ESQUINA C/ CAPICHINOS

LOCAL COMERCIAL Nº 3

PLTA BAJA:

-SUP. CONST. 123,00 M²

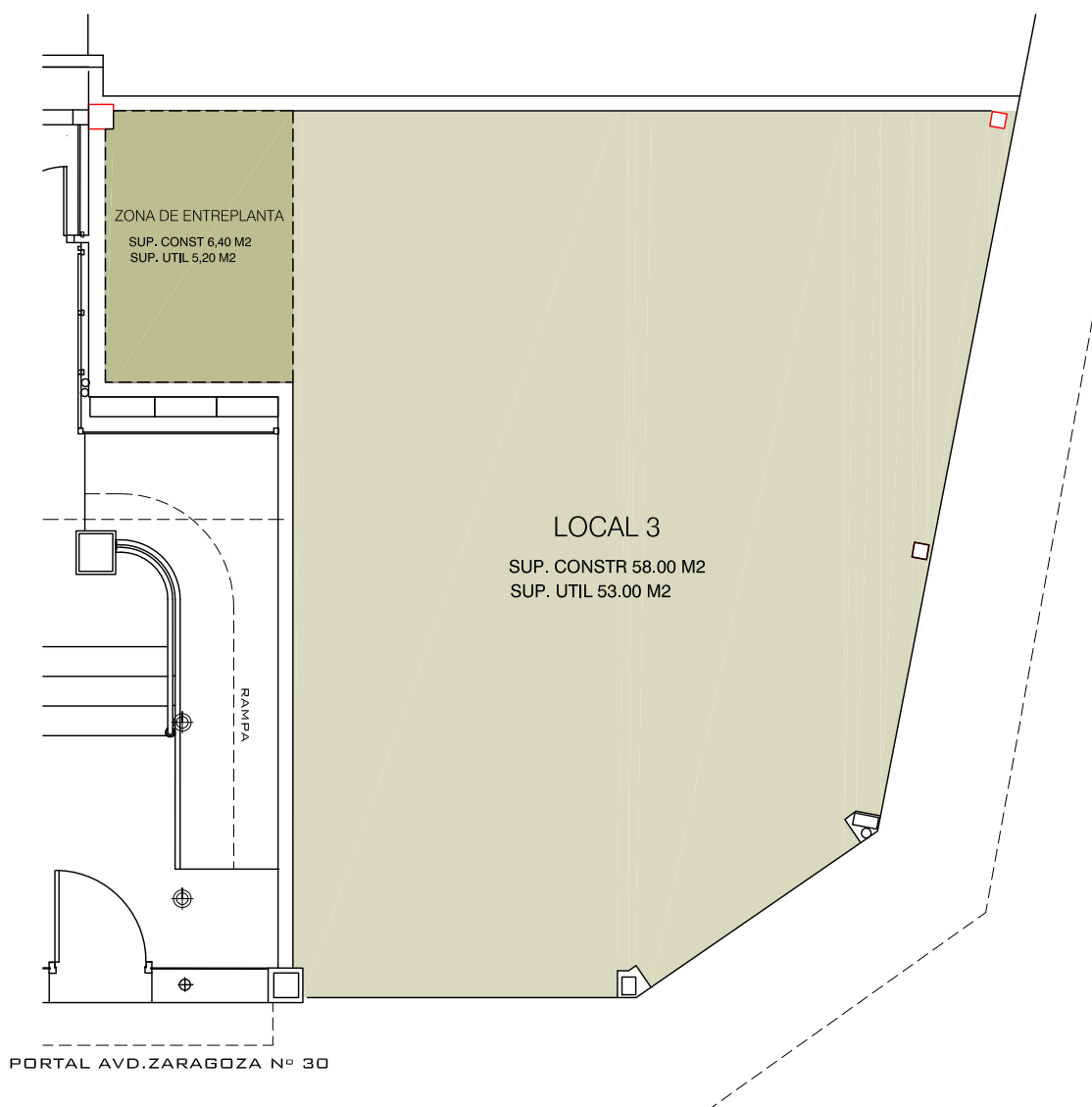
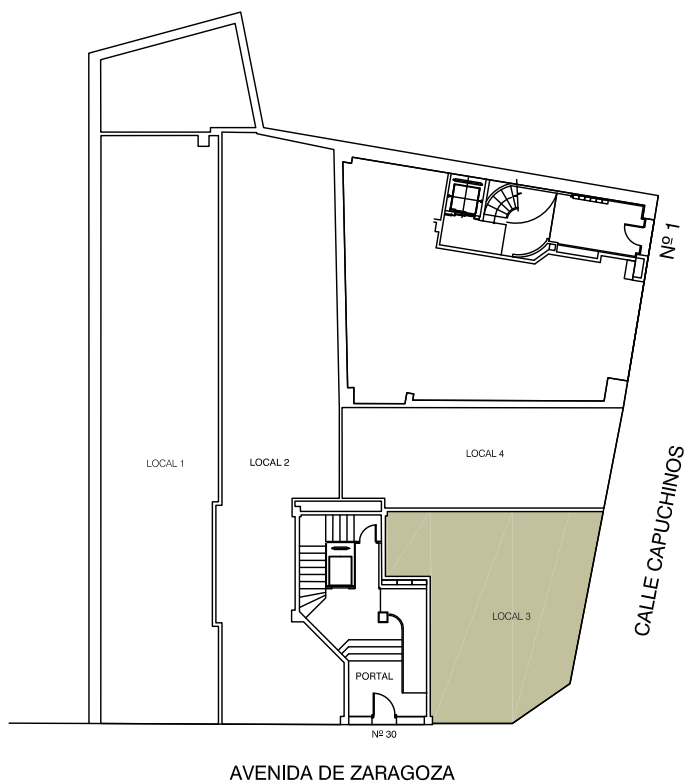
-SUP. UTIL 112,00 M²

PLTA ENTREPLANTA:

-SUP. CONST. 6,40 M²

-SUP. UTIL 5,20 M²

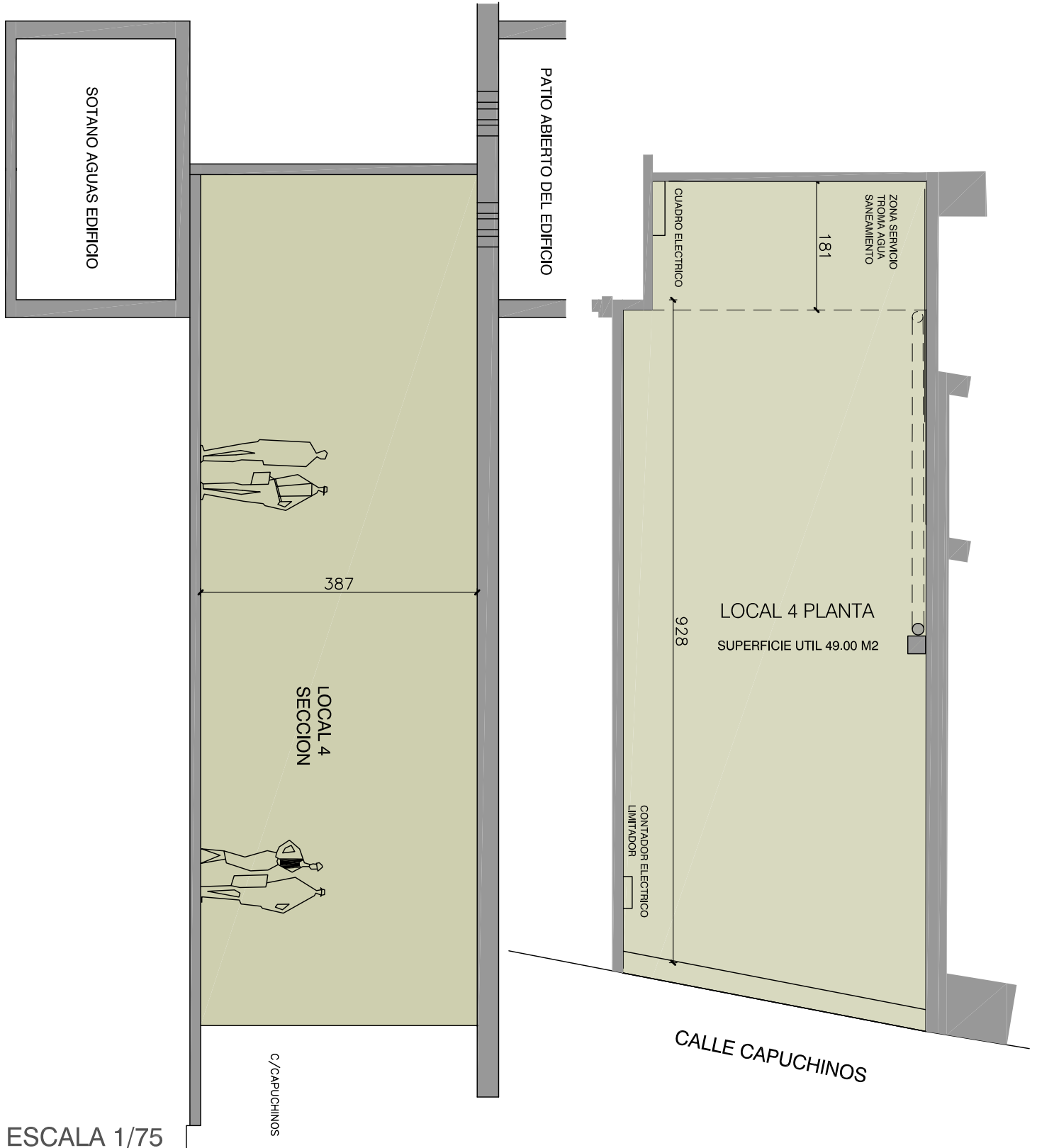
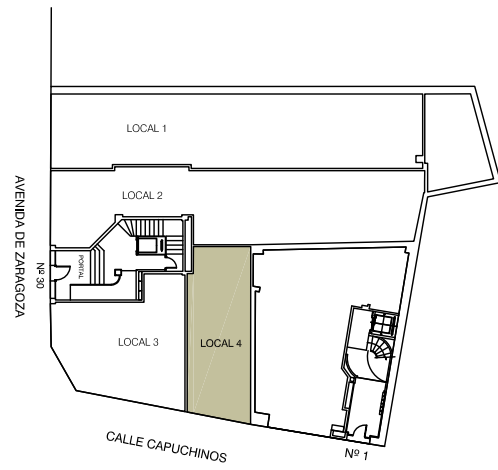
(ALTURA TOTAL LOCAL 3,95 M)



AV ZARAGOZA 30

FACHADA A C/ CAPUCHINOS

LOCAL COMERCIAL Nº 4
SUP. CONSTRUIDA 50,00 M2
SUP. UTIL 49,00 M2
(ALTURA TOTAL 3,872)



ESCALA 1/75